



FLOOR MATTING SOLUTIONS FOR THE HORECA SECTOR

WWW.CUBOHOTEL.COM
COMERCIAL@CUBOHOTEL.COM

CUBO  [®]
HOTEL

Professional Matting Solutions for HoReCa Areas

Discover our high-quality functional mats, proudly made in Europe and tailored to meet the specific needs of your establishment. Our products are customisable and excel in dirt and water absorption, making them ideal for high-traffic areas. Designed for industrial washing services, they ensure durability and ease of maintenance.

Our mats are engineered to capture a significant amount of dirt within their structure, reducing the frequency of vacuuming compared to standard mats. This feature is particularly beneficial in 24-hour operations, where maintaining cleanliness with minimal effort is crucial.



We offer the perfect matting solutions for every area, whether your focus is on cleanliness, safety, health, or enhancing your brand image.

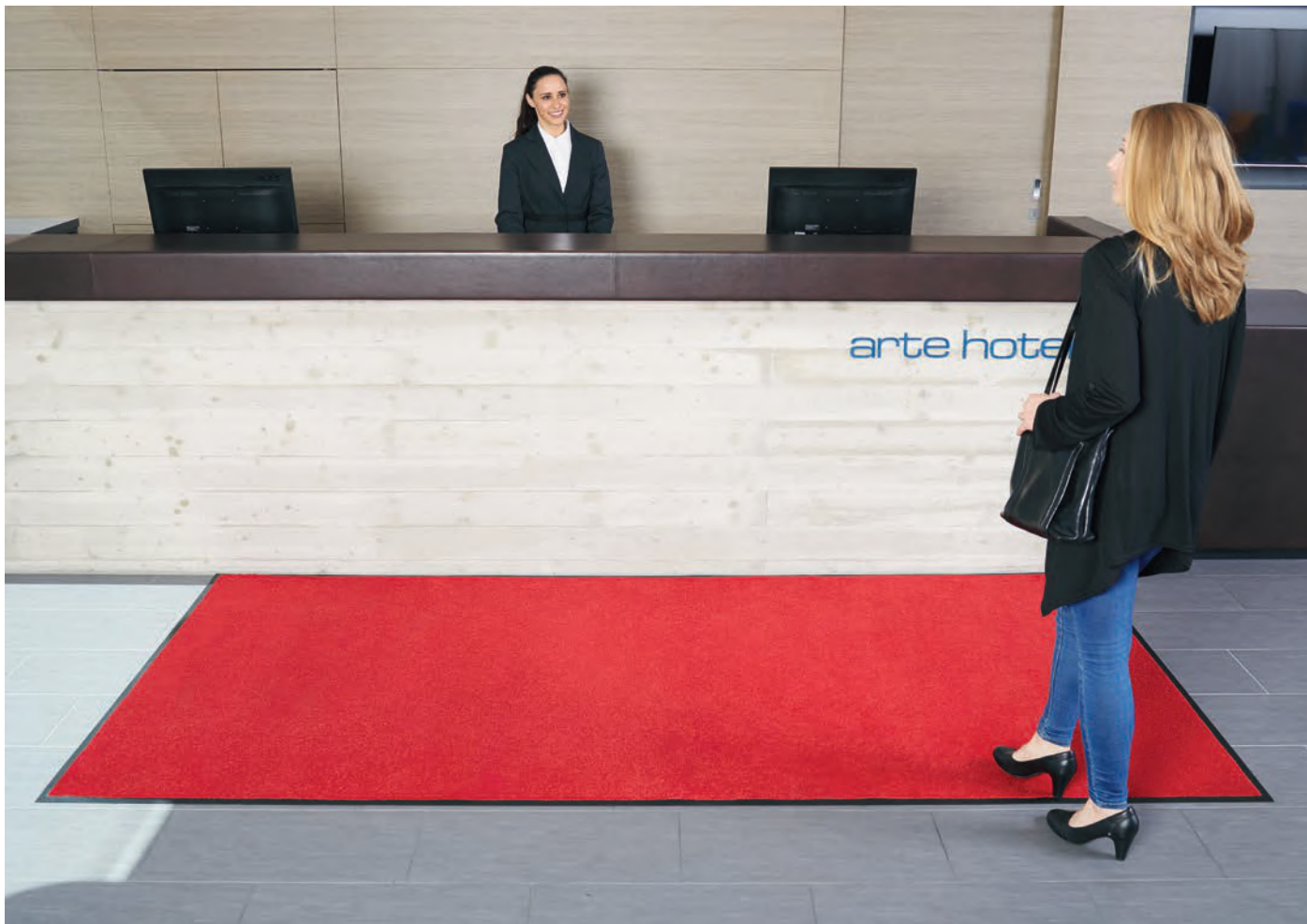
Explore where our products can be utilised on our map, and find our carefully selected offerings on the following pages.



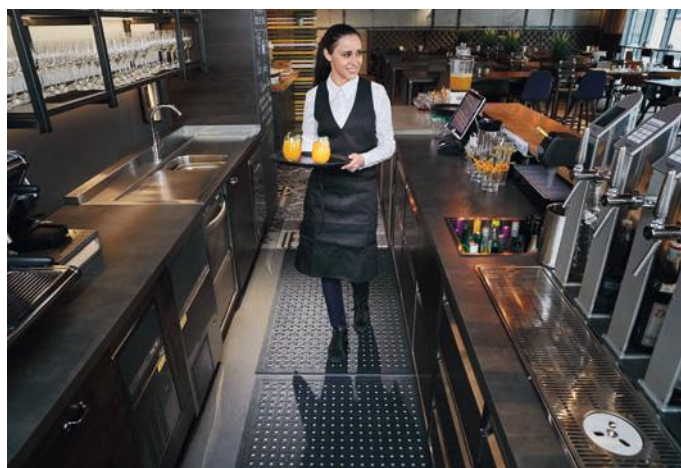
Enhance Your Hospitality Spaces with Essential Floor Matting Solutions

In hospitality settings like hotels, bars, and restaurants, clean and welcoming spaces are key to creating a great guest experience. Our mats serve different purposes across your venue: entrance mats help keep floors spotless and reduce cleaning effort, anti-fatigue mats support staff during long shifts, and stylish design mats enhance the ambiance or reinforce your brand.

Durable, easy to maintain, and thoughtfully designed – some mats support cleanliness, others comfort, and some your visual identity. Our versatile solutions contribute to an inviting and functional environment for both your team and your guests.



Proudly made in Europe, our mats are perfect for high-traffic areas. They provide exceptional dirt and moisture absorption, are fully serviceable, and can be customised to meet your specific requirements. Whether at entrances, receptions, bars, kitchens, or hotel rooms, our matting solutions combine practical protection with aesthetic appeal, benefiting both your business and the well-being of your staff and guests.



Create a Clean & Safe First Impression with High-Performance Entrance Matting

Designed for professional use in high-traffic areas, our entrance mats combine durability, slip resistance, and moisture absorption. They help reduce indoor dirt, lower cleaning costs, and minimise slip hazards—serving as a reliable first line of defence in busy entrances.

Built for long-term performance, these mats are fully serviceable, customisable, and available in a variety of colours and sizes. A practical, hygienic, and sustainable solution for cleaner, safer, and more professional environments across Europe.



EcoAbsorb

STANDARD ENTRANCE MATS



The EcoAbsorb mat is super absorbent, quick-drying, and highly durable, making it perfect for busy public entrances and high foot traffic areas. Made with 50% recycled nylon, it minimises environmental impact by saving energy, reducing CO₂ emissions, and lowering water consumption during production. EcoAbsorb dries 37% faster than cotton mats, further conserving energy, time, and money during laundry cycles. This eco-friendly choice combines functionality with sustainability for professional entrance solutions.



Why Choose EcoAbsorb?	Technical Details	Specification
<ul style="list-style-type: none"> » Unparalleled drying capability » Dries 37% faster than a cotton mat » Highly resilient and durable pile » Made from Renycle® 50% recycled nylon » 45% less energy used in production » Machine washable up to 60°C » 5 years Manufacturers Guarantee* » Made in Europe 	<p>Materials</p> <ul style="list-style-type: none"> » A combination of micro nylon and high-twist nylon (HTN) polyamide 50% recycled yarn » 100% phthalate-free nitrile rubber <p>Applications</p> <ul style="list-style-type: none"> » Entrances » Receptions » Corridors » Elevators <p>Certifications</p> <ul style="list-style-type: none"> » EN 13501-1 / CFL-s1 » EN 14041 Antistatic <p>Absorption:</p> <ul style="list-style-type: none"> » Dirt absorption: 1100 g/m² » Moisture absorption: 5-6 l/m² 	<p>Height</p> <ul style="list-style-type: none"> » Approx. 15 mm <p>Weight</p> <ul style="list-style-type: none"> » 2.85 kg/m² <p>Standard Sizes</p> <ul style="list-style-type: none"> » 60 x 85 cm » 85 x 120 cm » 85 x 150 cm » 85 x 300 cm » 115 x 175 cm » 150 x 240 cm <p>Widths</p> <ul style="list-style-type: none"> » 85 cm » 115 cm » 150 cm » 200 cm <p>Lengths</p> <ul style="list-style-type: none"> » Up to 700 cm



Mineral Grey

*2 year guarantee under industrial laundry conditions.
For all mats we reserve the right of production-related tolerance of +/- 3% in size. Colours are subject to commercial tolerance.

Iron-Horse Eco

STANDARD ENTRANCE MATS



Iron-Horse XL • Black Mink • 115 x 300 cm



Prevent dirt and moisture from being tracked into your building with the professional's choice in entrance mats, now featuring a construction with at least 75% recycled surface content and a phthalate-free nitrile rubber backing. With over 50 years of collaboration with the professional textile service industry, we have re-engineered our renowned Iron-Horse product to set a new standard in sustainability and performance



Why Choose Iron-Horse Eco?	Technical Details	Specification
<ul style="list-style-type: none"> » Our best selling professional entrance mat » High dirt and moisture absorption » Fully serviceable product » Slip-resistant rubber backing » Suitable for underfloor heating » 5 years Manufacturers Guarantee* » Made in Europe 	<p>Materials</p> <ul style="list-style-type: none"> » 100% High-Twist Nylon Polyamide 6.6 made from at least 75% recycled content » 100% Phthalate-free nitrile rubber <p>Applications</p> <ul style="list-style-type: none"> » Entrances » Receptions » Corridors » Elevators <p>Certifications</p> <ul style="list-style-type: none"> » NFSI High-Traction <p>Absorption:</p> <ul style="list-style-type: none"> » Dirt absorption: 800 g/m² » Moisture absorption: 3-4 l/m² 	<p>Height</p> <ul style="list-style-type: none"> » Approx. 10 mm <p>Weight</p> <ul style="list-style-type: none"> » 2.4 kg/m² <p>Standard Sizes</p> <ul style="list-style-type: none"> » 60 x 85 cm » 85 x 120 cm » 85 x 150 cm » 85 x 300 cm » 115 x 175 cm » 150 x 240 cm <p>Widths</p> <ul style="list-style-type: none"> » 85 cm » 115 cm » 150 cm » 200 cm** <p>Lengths</p> <ul style="list-style-type: none"> » Up to 700 cm



*2 year guarantee under industrial laundry conditions. **Black Pearl, Black Steel, Black Cedar, Granite and Midnight Grey only. For all mats we reserve the right of production-related tolerance of +/- 3% in size. Colours are subject to commercial tolerance.

Green-Horse

STANDARD ENTRANCE MATS



Green-Horse • 85 x 150 cm

The Green-Horse mat, made entirely from recycled PET bottles, excels in trapping dirt and debris before they enter your building. Utilising the most recyclable plastic, PET, this mat contributes positively to the environment by reducing landfill waste. Its quick drying times ensure effectiveness and hygiene in high-traffic areas, while its heat resistance enhances durability. Ideal for those prioritising cleanliness and sustainability, Green-Horse offers an eco-friendly solution for maintaining a pristine indoor environment.



Why Choose Green-Horse?	Technical Details	Specification
<ul style="list-style-type: none"> » Pile made from 100% recycled PET material » Fast drying time » Fully serviceable product » Slip-resistant rubber backing » Suitable for underfloor heating » 5 years Manufacturers Guarantee* » Made in Europe 	<p>Materials</p> <ul style="list-style-type: none"> » 100% recyclable PET plastic » 100% Phthalate-free nitrile rubber <p>Applications</p> <ul style="list-style-type: none"> » Entrances » Receptions » Corridors » Elevators <p>Certifications</p> <ul style="list-style-type: none"> » EN 13501-1 / Cfl-s1 » EN 14041 Antistatic » NFSI High-Traction <p>Absorption:</p> <ul style="list-style-type: none"> » Dirt absorption: 800 g/m² » Moisture absorption: 3-4 l/m² 	<p>Height</p> <ul style="list-style-type: none"> » Approx. 10-11 mm <p>Weight</p> <ul style="list-style-type: none"> » 2.65 kg/m² <p>Standard Sizes</p> <ul style="list-style-type: none"> » 60 x 85 cm » 85 x 120 cm » 85 x 150 cm » 85 x 300 cm » 115 x 175 cm » 150 x 240 cm <p>Widths</p> <ul style="list-style-type: none"> » 85 cm » 115 cm » 150 cm <p>Lengths</p> <ul style="list-style-type: none"> » Up to 700 cm



Smokey Black

*2 year guarantee under industrial laundry conditions.
For all mats we reserve the right of production-related tolerance of +/- 3% in size. Colours are subject to commercial tolerance.

Super-Mat

STANDARD ENTRANCE MATS



Super-Mat • Black Lava • 85 x 150 cm



The Super-Mat is a dual-performance entrance mat designed to scrape and wipe, featuring an eco-friendly surface made from 100% ECONYL® regenerated nylon. This heavy-duty mat effectively keeps buildings cleaner by combining fine heat-set fibers with robust fibers for superior dirt and moisture absorption. It is slip-resistant, light-fast, and colourfast, making it ideal for high-traffic areas like entrances and receptions.



Why Choose Super-Mat?	Technical Details	Specification
<ul style="list-style-type: none"> » Dual performance; scrape and wipe » Made from Econyl® regenerated nylon » Fully serviceable product » Slip-resistant rubber backing » Lightfast and colour fade resistant » Suitable for underfloor heating » 5 years Manufacturers Guarantee* » Made in Europe 	<p>Materials</p> <ul style="list-style-type: none"> » 100 % regenerated ECONYL® nylon surface » 100% Phthalate-free nitrile rubber <p>Applications</p> <ul style="list-style-type: none"> » Entrances » Receptions » Corridors » Elevators <p>Certifications</p> <ul style="list-style-type: none"> » EN 13501-1 / Cfl-s1 » EN 14041 Antistatic » NFSI High-Traction <p>Absorption:</p> <ul style="list-style-type: none"> » Dirt absorption: 950 g/m² » Moisture absorption: 3-4 l/m² 	<p>Height</p> <ul style="list-style-type: none"> » Approx. 10 mm <p>Weight</p> <ul style="list-style-type: none"> » 3.1 kg/m² <p>Standard Sizes</p> <ul style="list-style-type: none"> » 60 x 85 cm » 85 x 120 cm » 85 x 150 cm » 85 x 300 cm » 115 x 175 cm » 150 x 240 cm <p>Widths</p> <ul style="list-style-type: none"> » 85 cm » 115 cm » 150 cm <p>Lengths</p> <ul style="list-style-type: none"> » Up to 700 cm



Black Lava



Heather Grey

*2 year guarantee under industrial laundry conditions.
For all mats we reserve the right of production-related tolerance of +/- 3% in size. Colours are subject to commercial tolerance.

Monotone

STANDARD ENTRANCE MATS



Monotone • Navy • 115 x 175 cm



Compliment interior spaces and corporate décor with this purest of coloured mats. The Monotone mat will compliment any space where cleanliness and style are important. Developed to stand up to the toughest demands in foot traffic. The surface texture removes dirt and moisture from passing shoes, and retains it between the fibres. Combine this excellent functionality with a slip-resistant nitrile rubber backing, the Monotone mat is home amongst the leaders in professional entrance matting.



Why Choose Monotone?	Technical Details	Specification
<ul style="list-style-type: none"> » Contemporary colour selection » High dirt and moisture absorption » Fully serviceable product » Slip-resistant rubber backing » Lightfast and colour fade resistant » Suitable for underfloor heating » 5 years Manufacturers Guarantee* » Made in Europe 	<p>Materials</p> <ul style="list-style-type: none"> » 100% high-twist nylon polyamide 6 surface » 100% Phthalate-free nitrile rubber (15% recycled rubber content) <p>Applications</p> <ul style="list-style-type: none"> » Entrances » Receptions » Corridors » Elevators <p>Certifications</p> <ul style="list-style-type: none"> » EN 13501-1 / Cfl-s1 » NFSI High-Traction <p>Absorption:</p> <ul style="list-style-type: none"> » Dirt absorption: 800 g/m² » Moisture absorption: 3-4 l/m² 	<p>Height</p> <ul style="list-style-type: none"> » Approx. 11-12 mm <p>Weight</p> <ul style="list-style-type: none"> » 2.4 kg/m² <p>Standard Sizes</p> <ul style="list-style-type: none"> » 60 x 85 cm » 85 x 120 cm » 85 x 150 cm » 85 x 300 cm » 115 x 175 cm » 150 x 240 cm <p>Widths</p> <ul style="list-style-type: none"> » 85 cm » 115 cm » 150 cm <p>Lengths</p> <ul style="list-style-type: none"> » Up to 700 cm



Slate Cool Grey Scarlet Smokey Mount Regal Red Sahara Navy Raven Black Taupe

*2 year guarantee under industrial laundry conditions.
For all mats we reserve the right of production-related tolerance of +/- 3% in size. Colours are subject to commercial tolerance.

Make a Lasting First Impression with Custom Logo Mats

Custom logo mats combine functionality with visual impact—ideal for entrances, lobbies, and promotional spaces. Designed for professional use, they reinforce your brand while keeping floors clean and safe in high-traffic areas.

Choose from 66 standard colours or match your brand precisely with Pantone, RAL, or HKS options. Available in various sizes, including up to 2 × 7 m and runners up to 2 × 20 m. Durable and versatile, they deliver long-lasting performance indoors or outdoors.

CUSTOM PRINTED MATS



Jet-Print

CUSTOM PRINTED MATS

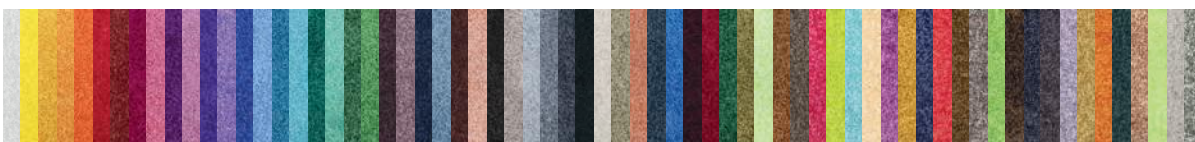


Jet-Print • 150 x 200 cm

Make a great first impression with Jet-Print custom logo mats. Tailored to your specifications, these mats offer a standard colour palette of 66 colors, with custom colors available. They feature vibrant, eye-catching designs combined with excellent dirt-catching abilities, making them ideal for high-traffic entrance and reception areas. Fully serviceable and EN 13501-1 fire safety certified, these mats are light-fast, phthalate-free, and compatible with underfloor heating. Their high-traction surface, certified by NFSI, ensures slip resistance.



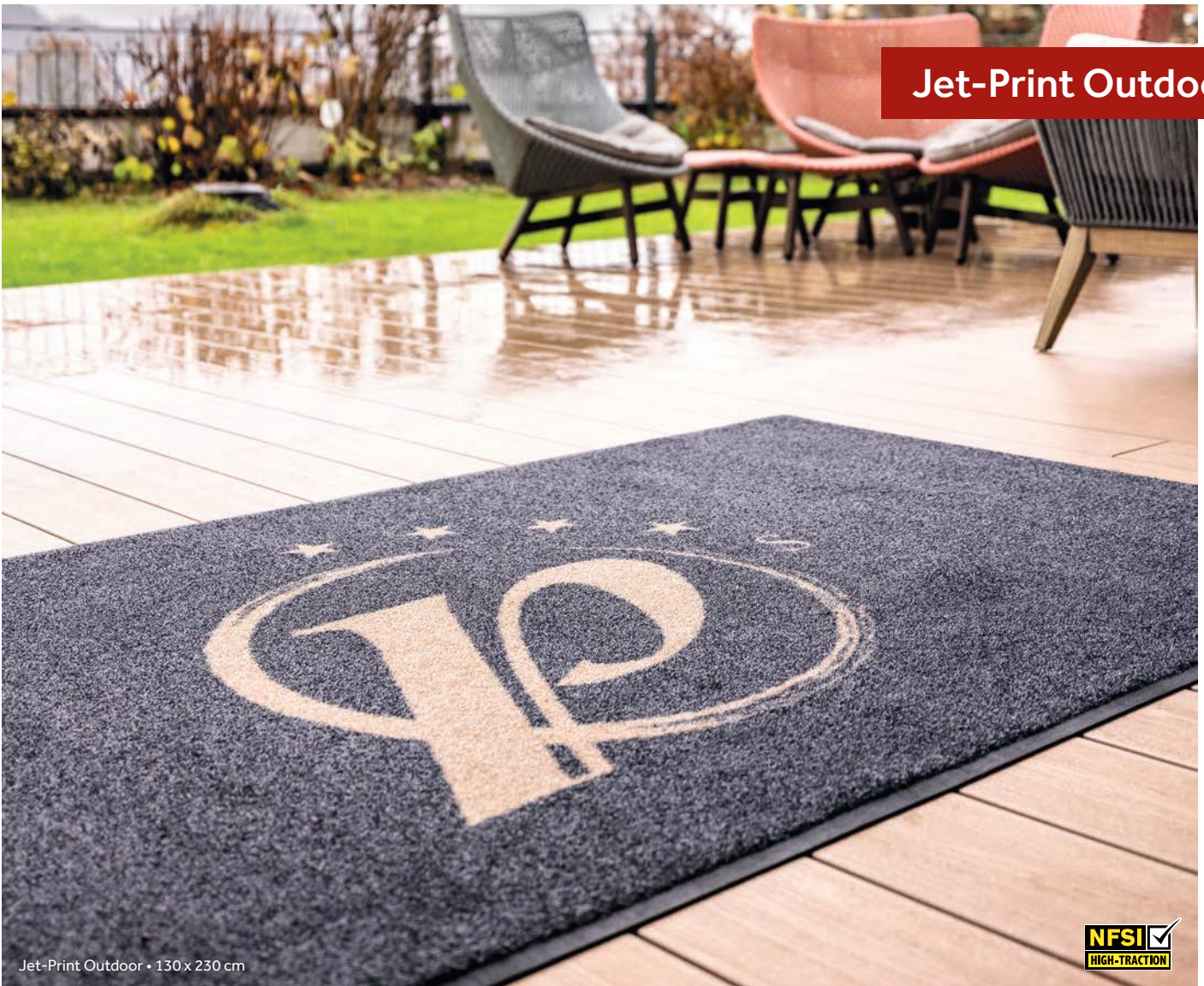
Why Choose Jet-Print?	Technical Details	Specification
<ul style="list-style-type: none"> » Fully customisable with your own designs » High dirt and moisture absorption » Durable nylon surface » Pantone, HKS and RAL matching available* » Custom shapes available* » Slip-resistant rubber backing » Lightfast and colour fade resistant » 5 years Manufacturers Guarantee** » Made in Europe 	<p>Materials</p> <ul style="list-style-type: none"> » 100% high-twist nylon polyamide 6.6 surface » 100% Phthalate-free nitrile rubber <p>Applications</p> <ul style="list-style-type: none"> » Entrances » Advertisement » Point of Sale » Corporate identity <p>Certifications</p> <ul style="list-style-type: none"> » EN 13501-1 / Cfl-s1 » EN 14041 Antistatic » NFSI High-Traction <p>Colour</p> <ul style="list-style-type: none"> » See Jet-Print palette below 	<p>Height</p> <ul style="list-style-type: none"> » Approx. 9 mm <p>Weight</p> <ul style="list-style-type: none"> » 2.48 kg/m² <p>Standard Sizes</p> <ul style="list-style-type: none"> » 60 x 85 cm » 85 x 120 cm » 85 x 150 cm » 85 x 300 cm » 115 x 175 cm » 150 x 240 cm <p>Widths</p> <ul style="list-style-type: none"> » 60 cm » 75 cm » 85 cm » 115 cm » 150 cm » 200 cm <p>Lengths</p> <ul style="list-style-type: none"> » Up to 700 cm



*Available for an additional surcharge **2 year guarantee under industrial laundry conditions. For all mats we reserve the right of production-related tolerance of +/- 3% in size. Colours are subject to commercial tolerance.

Jet-Print Outdoor

CUSTOM PRINTED MATS



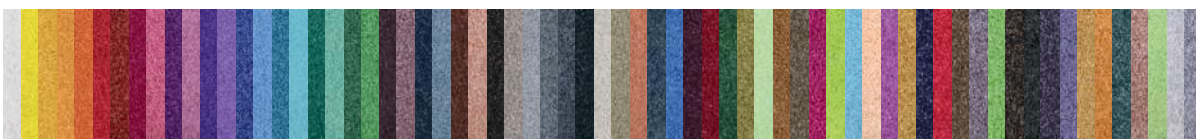
Jet-Print Outdoor • 130 x 230 cm



Want to showcase your logo or message outdoors? The Jet-Print Outdoor mat is specifically developed for this purpose. Our heavy-duty, weather-resistant mat features a durable nylon grass-effect surface that effectively handles coarse dirt while offering slip resistance. With the ability to print custom designs in a wide range of colours, you can display your brand or message right at your doorstep.



Why Choose Jet-Print Outdoor?	Technical Details	Specification
<ul style="list-style-type: none"> » Specifically developed for outdoor use » Fully customisable with your own designs » Coarse scraping action » Durable nylon grass effect surface » Custom shapes available* » Lightfast and colour fade resistant » 2 years Manufacturers Guarantee » Made in Europe 	<p>Materials</p> <ul style="list-style-type: none"> » 100% monofilament PA 6 surface » 100% Phthalate-free nitrile rubber <p>Applications</p> <ul style="list-style-type: none"> » Entrances » Events » Advertisement » Corporate Identity » Suitable for Outdoor Use <p>Certifications</p> <ul style="list-style-type: none"> » EN 13501-1 / Bfl-s1 » NFSI High-Traction <p>Colour</p> <ul style="list-style-type: none"> » See Jet-Print palette below 	<p>Height</p> <ul style="list-style-type: none"> » Approx. 8 mm <p>Weight</p> <ul style="list-style-type: none"> » 3.6 kg/m² <p>Standard Widths</p> <ul style="list-style-type: none"> » 50 cm » 85 cm » 115 cm » 150 cm » 200 cm <p>Lengths</p> <ul style="list-style-type: none"> » Up to 700 cm



*2 year guarantee under industrial laundry conditions.
For all mats we reserve the right of production-related tolerance of +/- 3% in size. Colours are subject to commercial tolerance.

Jet-Print Horizon

CUSTOM PRINTED MATS

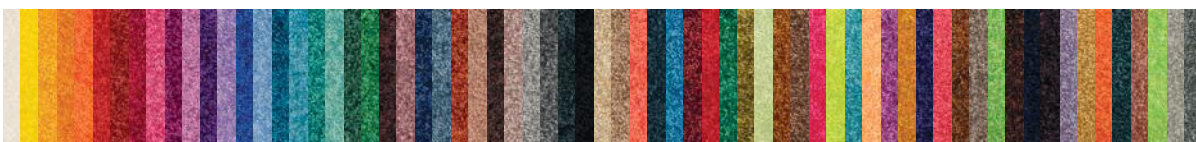


Jet-Print Horizon • 160 x 840 cm

Create a lasting red carpet experience for your guests with Jet-Print Horizon Mats. These EXTRA-LONG runners extend up to 20 meters and can be seamlessly connected for even greater lengths, offering endless creative possibilities for corridors, large spaces, and grand entrances. Experience luxury underfoot with our EXTRA-PLUSH pile, 60% heavier than our standard Jet-Print fabric, providing unmatched comfort. Built EXTRA-STRONG, the heavyweight surface combined with a robust vinyl backing makes the Jet-Print Horizon one of our most resilient mats.



Why Choose Jet-Print Horizontal?	Technical Details	Specification
<ul style="list-style-type: none"> » Extra long runner mat » High dirt and moisture absorption » Plush and durable nylon surface » Fully customisable with your own designs » Heavyweight durable vinyl backing » Pantone, HKS and RAL matching available* » Lightfast and colour fade resistant » 2 year guarantee » Made in Europe 	<p>Materials</p> <ul style="list-style-type: none"> » 100% high-twist nylon polyamide 6.6 surface » 100% vinyl backing <p>Applications</p> <ul style="list-style-type: none"> » Entrances » Advertisement » Corridors » Events » Corporate Identity <p>Certifications</p> <ul style="list-style-type: none"> » EN 13501-1 / Bfl-s1 » NFSI High-Traction <p>Colour</p> <ul style="list-style-type: none"> » See Jet-Print palette below 	<p>Height</p> <ul style="list-style-type: none"> » Approx. 10 mm <p>Weight</p> <ul style="list-style-type: none"> » 3.8 kg/m² <p>Standard Widths</p> <ul style="list-style-type: none"> » 100 cm including side borders » 160 cm including side borders » 200 cm including side borders <p>Bespoke Length</p> <ul style="list-style-type: none"> » Up to 2000 cm



*Available for an additional surcharge
For all mats we reserve the right of production-related tolerance of +/- 3% in size. Colours are subject to commercial tolerance.

Enhance Your Play Areas with XL Game Mats

Transform the children's play areas in your establishment with our innovative XL Game Mats. Designed to combine play, fun, and movement, these mats feature large-scale board games printed directly onto them. They are perfect for keeping young guests entertained while encouraging active play and interaction.

Unleash Creativity and Fun with Our Customisable Play Mats!

Choose from our pre-designed options or create your own play mat designs to personalise your spaces, reflecting your institution's spirit and creativity.



Jet-Print Light Product Information:

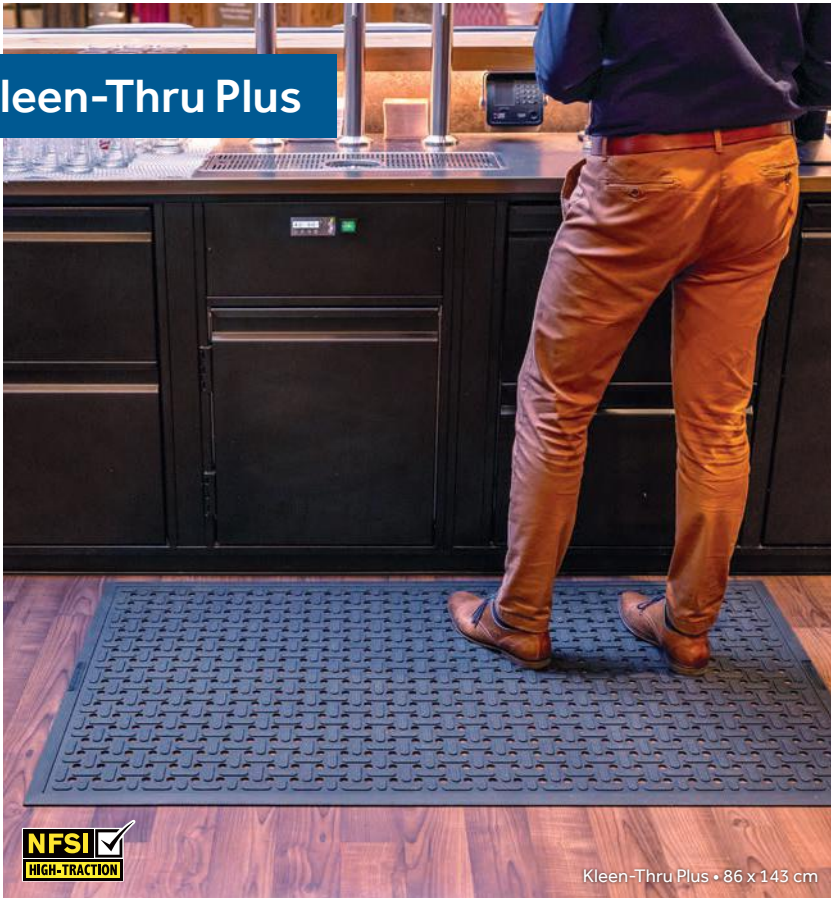
- **Surface:** 100% high-twist nylon
- **Backing:** 100% nitrile rubber
- **Certifications:** OEKO-TEX certified
- **Features:** Slip resistant rubber backing ensures stability during play
- **Care Instructions:** Washable up to 60°C, dryer-safe for easy maintenance

Bring joy and excitement into your classrooms with our versatile Play Mats. Perfect for schools, nurseries, and daycare centres!

Functional Matting

Professional Mat Solutions for Industrial Kitchens and Bar Areas

Kleen-Thru Plus



Kleen-Thru Plus • 86 x 143 cm

Designed for professional kitchens and bars, the Kleen-Thru Plus mat features an all-nitrile rubber construction with built-in antimicrobial properties to inhibit bacterial growth. Its resilient design reduces fatigue during long-standing tasks and prevents impact breakage.

The textured surface ensures secure footing, while strategically placed holes enhance drainage and cleanliness.

Resistant to oils and grease, this mat is lightweight for easy handling and cleaning. It meets ADA guidelines and can be washed at 60°C, jet washed, or steam cleaned.

Bar-Mat



Subli-Mat Bar • 23 x 43 cm

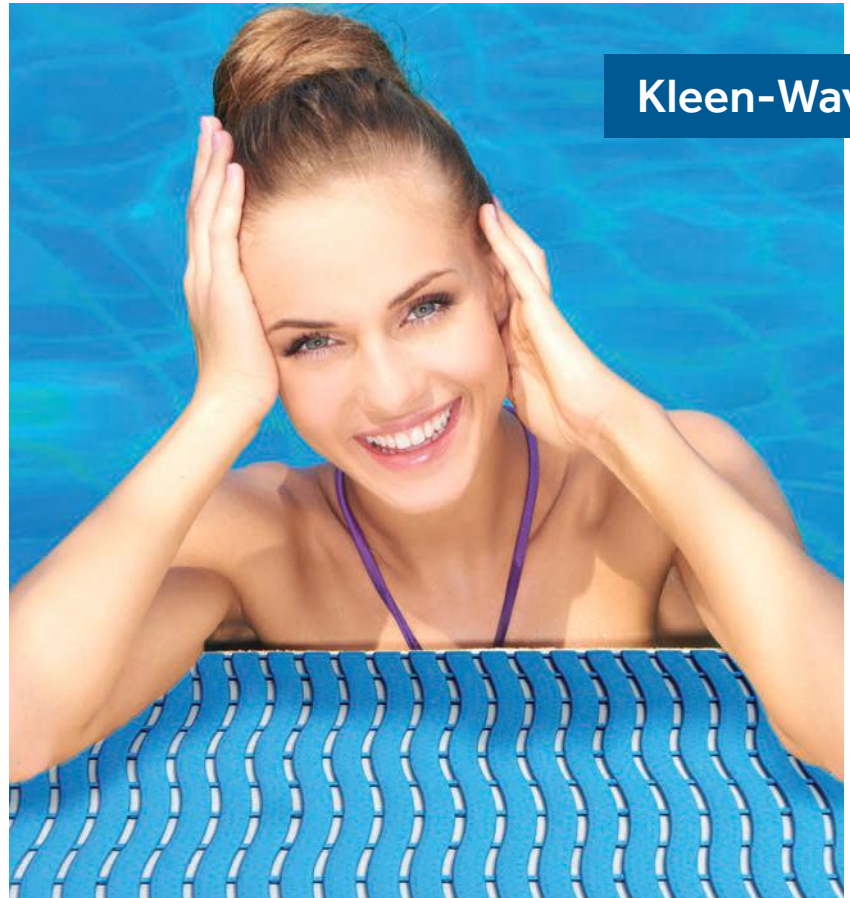
Enhance your bar's presentation with our Bar-Mat, offering the highest picture definition on a functional mat. With full CMYK photo-real printing, these mats display brands, logos, and marketing messages in vibrant clarity. Designed for bars and counters, they effectively bring your advertising campaigns into clear view at the point of sale.

Made in Europe, they are available starting at just 25 pieces, providing an accessible option for businesses to enhance their promotional efforts.

Safety in Wet Areas and Ergonomic Anti-Fatigue Mats

Reduce the risk of slips and trips at pool sides, saunas and shower rooms with Kleen-Wave safety matting. Designed specifically for wet areas (both indoors and outdoors), its interlocking structure makes it great for covering large spaces - and it is 100% recyclable.

Reduces slip and trip accidents by providing good traction for bare feet, its soft-touch plastic construction also cushions and reduces impact damage in the event of a fall, thus reducing the likelihood of serious injury.



Kleen-Wave

The Kleen-Comfort Mat is the ideal solution for receptionists who need to stand for long periods. This anti-fatigue mat provides comfort and support by reducing fatigue, alleviating stress on joints and muscles, and promoting better posture and circulation. Made from materials like rubber and foam, it offers shock absorption and anti-slip properties.

This product is available with different surface options and can be personalised with your individual design, making it perfect for company branding or safety messages.



Kleen-Comfort Mat

Kleen-Comfort Design • 85 x 150 cm



Design Elements for Your Hotel Rooms and Waiting Areas



Immerse yourself in our world of products that seamlessly blend design with functionality. Discover our premium brand, wash+dry, where vibrant patterns and colours meet exceptional practicality. These washable, durable runners and rugs come in a wide array of designs and colours, ensuring there's something to suit every taste.

To explore the full collection, simply scan the QR code or visit our website at [wash-and-dry.eu](https://www.wash-and-dry.eu).



